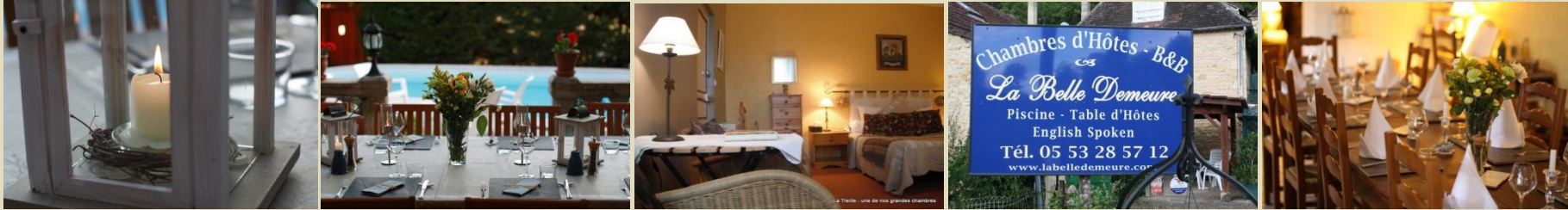


# *La Belle Demeure*



Bravo!

La Belle Demeure rated excellent by 140 travellers

*La Belle Demeure - Lieu-dit Le Bouscot - 24250 Saint Cybranet – France Téléphone : 00 33 5 53 28 57 12*

*Chambres et Table d'Hôtes en Dordogne - Au cœur du Périgord Noir*

*E-mail : [frogetrosbif@wanadoo.fr](mailto:frogetrosbif@wanadoo.fr)*



## *A great place to stay...*

*Ideally situated in the Périgord Noir, La Belle Demeure is the perfect place to take that relaxing and well-deserved break...*

*Just 9 miles from the medieval town of Sarlat and 2 miles from the Dordogne Valley, La Belle Demeure is nestled in the Céou Valley, halfway along the road between the Bastide town of Domme and the striking castle of Castelnaud.*

*There are many of the most visited sites in the region very nearby such as Sarlat, Beynac, La Roque Gageac, Josephine Baker's Chateau Les Milandes, Lascaux II, Rocamadour etc ..., so there is always somewhere new to explore in this pretty corner of the Dordogne and you will never be short of something to do.*

*What with over 450 miles of way-marked walking trails and cycling tracks right on our doorstep it is easy to see why the Dordogne so effortlessly attracts so many visitors year after year.*

*La Belle Demeure est recommandée par le guide "Le Petit Futé des 1001 Meilleures Chambres d'Hôtes et Fermes Auberges 2013".*



## *The Guestrooms*


*Your hosts, Richard (the 'Rosbif') and Philippe (le 'Frog'), have been running this bed and breakfast for ten years and will endeavour to make your stay as comfortable and enjoyable as possible.*




*The guestrooms are in a former coaching house dating back to the 18th century has been carefully renovated to enhance many original features - open fireplaces, stonework and exposed beams. Each guestroom is en-suite with shower, wash-basin and WC. Of the two larger rooms, one can be made up with two beds (one large Queen and one single). New as of 2013: 160cm/5'3" beds in the large rooms.*





 The Swimming Pool (closed Oct-April) has a safety alarm and measures 8m x 4m (26' x 13') and is 1.20m (4') deep.

 Once you pass the front gate, the house, the Family Suite and the outside areas are strictly **non-smoking**.

Altogether, La Belle Demeure can welcome a maximum of 14 people because in addition to our guestrooms, we can offer you .....

## *The Family Suite*

Ideal for families or friends, our two-bedroomed suite measures approximately 750 sq. ft. sleeping 4 comfortably in the former stables attached to the coaching house. Bright, airy, and recently renovated, the Family Suite also gives you that extra bit of privacy that some may look for.

The Suite has 2 bedrooms; a double (with one 5'3" bed) and a twin (with two 3' beds), a spacious east & south facing living area, large bathroom with shower & dressing area, with outside access direct onto a terrace over-looking the pool. If you wish, we can also add a rollaway/put-you-up bed for a 5<sup>th</sup> person/child. At certain times of the year we do impose a minimum 3 or 4 night stay.

Please note that there are no cooking facilities or fridge available in the Suite. There is a DVD player for you to use in the lounge area.



Chelsea - une de nos chambres standards



## *Tastes of the Périgord at our Table d'Hôtes*

*And after a busy day's sight-seeing, why not have dinner with us? You can take the option of a delicious evening meal served 'Table d'Hôtes' style whether it be in the dining room, or outside on the terrace shaded by its century-old vine over-looking the swimming pool.*

*..... Imagine sitting on the vine-shaded terrace, the early evening sun glinting off the pool, sipping a glass of wine, an iced Pastis, or a glass of Philippe's home-made 'vin de noix' - or in our cosy lounge around the open fireplace during the Winter months.*



*Table d'Hôtes' style is the way to spend your evening with us and your fellow guests all around the same table enjoying some original dishes like Gratin de Confit de canard aux Marrons (a duck and potato dish with chestnuts), Whiskey flamed chicken en croûte, Duck Confit with Pommes Sarladaises (garlic and parsley), Périgordine Lasagne, Terrine with onion marmalade, Cabecou (a local goat's cheese) and spinach tart and many others. For dessert, try to keep a bit of room for some very local walnut cake, an apple clafoutis, homemade 'parfait' ice-cream or Bread and Butter Pudding à la Brioche. Then to accompany your meal you can choose one of our personally selected Bergerac wines, or from our selection of non-alcoholic drinks.*

*About the evening meal...* *We serve most nights of the week, but not all. If you are interested in having dinner here on the night you arrive, do let us know and we can tell you whether or not we plan to serve dinner that particular night. For the other nights, we take bookings up until the end of breakfast of that day. Our 4-course dinner is 24 Euros per person without drinks (children aged 9 to 12 are 18€ with those 8 and under are 13€). We hope we have tempted you as we would like you to enjoy dinner here. However do let us know if you are vegetarian/coeliac/lactose intolerant or have any major food allergies or dislikes, as we can adapt to most things if we know ahead of time.*

## Nightly B&B rates 2014

As of early 2014 up to 30 <sup>th</sup> June 2014	1 night	2 or 3 nights	4, 5 or 6 nights	7 nights and more
<b>Cosy Bedroom</b> 11m <sup>2</sup> 140 cm / 4'6" bed	-	68 €/ night	63 €/ night	60 €/ night
<b>Large Bedroom</b> 21m <sup>2</sup> 160 cm / 5'3" bed	108 €	84 €/ night	79 €/ night	74 €/ night
<b>Large Bedroom</b> 21m <sup>2</sup> Twin bedded	118 €	94 €/ night	89 €/ night	84 €/ night
<b>Large Bedroom</b> 21m <sup>2</sup> for 3 people	131 €	107 €/ night	102 €/ night	94 €/ night
<b>Family Suite</b> 70m <sup>2</sup> up to 4 people	-	160 €/ night	150 €/ night	145 €/ night

During particularly busy periods/French Bank Holiday weekends, we may ask for a minimum 2 or 3 nights stay.

Rates reflect the increase in French taxes as of January 1<sup>st</sup> 2014

1 <sup>st</sup> July to 31 <sup>st</sup> August 2014	1 night	2 or 3 nights	4, 5 or 6 nights	7 nights and more
<b>Cosy Bedroom</b> 11m <sup>2</sup> 140 cm / 4'6" bed	-	77 €/ night	73 €/ night	68 €/ night
<b>Large Bedroom</b> 21m <sup>2</sup> 160 cm / 5'3" bed	-	94 €/ night	88 €/ night	83 €/ night
<b>Large Bedroom</b> 21m <sup>2</sup> Twin bedded	-	104 €/ night	99 €/ night	94 €/ night
<b>Large Bedroom</b> 21m <sup>2</sup> for 3 people	-	116 €/ night	111 €/ night	104 €/ night
<b>Family Suite</b> 70m <sup>2</sup> up to 4 people	-	181 €/ night	171 €/ night	164 €/ night

### RESERVATION TERMS & CONDITIONS / OTHER INFORMATION

**Rooms :** The Family Suite measures about 70m<sup>2</sup> (750 sq ft), a large bedroom with a 160 cm (5'3" bed) measures about 21m<sup>2</sup> (225 sq ft) and a cosy bedroom with a 140 cm (4'6" bed) measures about 11m<sup>2</sup> (115 sq ft).

**Tariffs:** are per room, per night and include breakfast & all taxes for 2 people (unless otherwise stated).

**½-Board :** adds 24 Euros per person on top. Children are given the same food as their parents - those aged 9 to 12 inclusive at 18 Euros & those aged 8 and under having a half-portion for 13 Euros. Evening Meal is not compulsory, but must be reserved in advance. The price is for dinner only, & as we are a licensed establishment, your meal can be accompanied by your choice from our reasonably priced list of alcoholic and non-alcoholic drinks. If you have any major food allergies/dislikes, do let us know at the time of booking.



**Arrival times** : between 4pm and 7pm.

**Departure** : by 10am at the latest please

*As we do serve dinner and have a drinks menu, please note that we do not allow you to picnic or to consume your own food and drink on the premises.*

**Late Arrivals** : for any unarranged arrivals after 7pm, please be aware that you may be refused entry to the house, with your booking being treated as a late cancellation with no possibility to re-let.

**Deposit** : If you wish to go ahead and make a booking we will ask for some form of guarantee in the event of any cancellation. If you need to cancel your stay we may decide to refund your deposit. Should that be the case, we will levy a 10 € fee. All stays must be settled in full *as reserved* upon departure even if you must change your arrival or departure dates prior to your arrival or once you are here, for whatever reason. For peace of mind, we strongly recommend that you take out holiday insurance while you are away from home.

**Babies** : we can accept babies in the larger bedrooms or the Family Suite - please add 5 Euros per night.

**Groups** : We can accommodate up to 14 people at La Belle Demeure. For any large bookings, certain conditions apply regarding pre-payment.

**Smoking** 🚭: Once you pass the front gate, the house, the Family Suite and the outside areas are strictly **non-smoking**

**Parking** : in our field, just over the road.

**Your Reservation** : We respectfully remind guests that a reservation constitutes a contract between themselves and La Belle Demeure. In the event of cancellations, alterations or reduction of numbers by the client, we will undertake to mitigate our losses and to re-let the room at similar rates. The Guest will be responsible for the loss incurred by La Belle Demeure in the event that rooms remain unoccupied, or are occupied at a lower rate than the date the room was originally booked. The cancellation charges imposed by La Belle Demeure will therefore reflect the actual loss. Any postponement of confirmed bookings will be treated as cancellation. However, should we



be in a position to refund your deposit, we will levy a 10 € administration fee. For peace of mind, we strongly recommend that you take out holiday insurance while you are away from home.

**Payment/Deposit :** Please note we do not accept credit or debit cards and that cash payments need to be in Euros. Contact us to verify the best method of guaranteeing your reservation if you do not hold a French bank account.

**PayPal :** We can accept prepayment for your stay by PayPal. In some cases, using this will be necessary in order to organise your deposit. The commission charged to us by PayPal will be added to your final bill.

**Weddings/Parties :** Due to the set up of the house, and for the respect of other guests staying with us, we are not at all suitable for guests attending functions outside who wish to come back to their rooms after midnight.

**Pets :** Even though we have a dog (our Golden Retriever, Casper), we regret that we cannot welcome your pets here at La Belle Demeure.

La Belle Demeure, Lieu-dit Le Bouscot, 24250 St. Cybranet, France

E-mail : [frogetrosbif@wanadoo.fr](mailto:frogetrosbif@wanadoo.fr) Tel.: 00 33 5 53 28 57 12

# Activities & Things to do

*We take pride in being able to advise guests on where to visit and what to see and here are some of our favourites...*



[Château de Castelnaud](#)



[Château des Milandes](#)



[Beynac - village & château](#)



[La Roque-Gageac](#)



[Domme](#)



[Sarlat](#)



[Lascaux II](#)



[Rocamadour](#)



[Monpazier](#)



[Le Gouffre de Padirac](#)



[Le Gouffre de Proumeyssac](#)



[Les Jardins d'Eyrignac](#)



[Les Jardins de Marqueyssac](#)



[La Roque-Saint-Christophe](#)



[Château de Fénelon](#)



[St Cirq Lapopie](#)



[Les Grottes de Pech Merle](#)



[Canoë Roquegeoffre / Canoës Loisirs](#)



[Bike Bus - bicycle hire](#)



[La Truffe Sarladaise, for local products](#)



🚗 We are just 45 minutes west of the A20 Paris-Toulouse motorway, and also just 40 minutes south of the A89 Bordeaux-Lyon motorway.



## Simple directions on how to find us

Use these precise, yet easy to follow directions below to find La Belle Demeure :

from [Sarlat](#), from [Souillac](#) (Motorway A20 from the North), from [Toulouse](#) (Motorway A20 from the South), from [Bergerac Airport](#), from [Périgueux](#) or from [Calais](#) (passing through Rouen avoiding Paris).

Click below for Google Maps using our Sat-Nav GPS co-ordinates:

[44° 47' 25" North, 01° 10' 24" East](#) or here for [Mappy](#) & [Via Michelin](#)

If you have any queries, please contact us here in Saint Cybranet on (+33 0) 5 53 28 57 12. Bonne Route!

✈ Our nearest airports are Brive-Souillac-Vallée de la Dordogne (1 hour), Bergerac (1¼ hours), Toulouse (2½ hours), Rodez (2¼ hours), Limoges (2½ hours) and Bordeaux (3 hours). There are frequent flights with FlyBE, Ryan Air, City Jet, Easy Jet, BA and Air France.

From **Sarlat** (about 20 minutes) :

Take the D46, towards Bergerac, to pass under the viaduct. This road number then turns into the D57 within 1 km. After about 5 miles (8 km), you will arrive in Vézac. Turn left (still on the D57) towards Castelnau/Daglan. After 1 mile (1½ km), you meet the D703, turn left onto it, and then directly right to take you across the Dordogne and into Castelnau. The D57 then leaves Castelnau (towards Saint Cybranet/Daglan) bearing to the left (heading up the Céou valley). After 2½ miles (4 km), you will arrive in Saint Cybranet. Go through the village, towards Cénac/Domme. After crossing the Céou River, the road bears right. La Belle Demeure has blue sign and is on the bend, the house before last on the left, the only one without a gate. Pull into our little courtyard so you can unload your car. Once you are settled in, we will show you where to park.

From **Souillac** (about 45 minutes) :

Leave the A20 Sortie/Exit 55 (towards Sarlat) taking the D804 (which will soon become the D703). After 12½ miles (20 km), leave the road to Sarlat off to your right and turn left to continue along the D703 towards La Roque Gageac/Bergerac for 7 miles (11½ km) (passing Carsac, Cingle de Montfort) until you turn left in Vitrac Port.

After turning left in Vitrac, you will continue for about another 2 miles (3 km) where you will see the road for La Roque Gageac turn off to your right, but you should use the D46 to continue on into Cénac, crossing the Dordogne. In Cénac, about 300 yards/metres after crossing the river, there is a crossroads at a café (Bar Pauly). Left would take you up to Domme, but you should turn right to take the D50, towards Saint Cybranet, climbing up and over the hill for about 3 miles (5 km). La Belle Demeure is the 2nd house on your right after passing the Saint Cybranet village sign, the only one without a gate and with a blue sign outside. Pull into our little courtyard so you can unload your car. Once you are settled in, you can then park your car in our field over the road.

From **Toulouse** (just under 2½ hours) :

Whether you are coming from the airport at Blagnac, or the town centre, you will need to leave Toulouse on the A62/E9/E72 Autoroute/Motorway, towards Bordeaux and Paris. This is not a free motorway, so expect to pay about 8 Euros in total. About 21 miles (34 km) from the first 'Péage'/Toll Booth after leaving Toulouse, you will need to fork off right taking the A20/E9 northwards, towards Montauban, Cahors, Brive and Paris. Stay on the A20 leaving at Sortie/Exit 57 (north of Cahors) on the D49 where you will find signs directing you onto the D820 (the old N20) for about 20 km and then the D704 where you will reach Gourdon 7½ miles (12 km) later.

Once in Gourdon, take the D673 through the town's one-way system. Continue on the D673, and as you are leaving Gourdon, turn left at the mini-roundabout following the signs for Fumel (but **not** the D704 towards Périgueux & Sarlat as this will take you round the houses quite a bit) for about 5½ miles (9 km), then turn right onto the D6 (becoming the D46 in the department of the Dordogne) for a further 9 miles (15 km) until you reach Cénac, just south of the Dordogne river. Before completely leaving the village there is a crossroads, just after a boulangerie. Right would take you up to Domme, but you should turn left to take the D50, towards Saint Cybranet, climbing up and over the hill for about 3 miles (5 km). *If, in Cénac, you cross the Dordogne River, you have gone too far - so turn around, go over the river again and get ready to turn right onto the D50 towards St Cybranet!* La Belle Demeure is the 2nd house on your right after passing the Saint Cybranet village sign, the only one without a gate and with a blue sign outside. Pull into our little courtyard so you can unload your car. Once you are settled in, you can then park your car in our field over the road.

From **Bergerac Airport** (about 1¼ hours) :

Once you leave the airport, turn right onto the main road, and then right again at the roundabout onto the new N21 (towards Sarlat/Cahors). After crossing the Dordogne River, take the right turning off the roundabout onto the D660 (towards Sarlat). This road number will change several times and you will cross the Dordogne river at Lalinde (just after you have gone through the village centre, there is a sharp turn right to take you over the bridge) and also just before St. Cyprien, but keep heading towards Sarlat passing through Lalinde, Le Buisson, Siorac-en-Périgord and Saint Cyprien until you pass through Beynac. Once out of Beynac, you will go under a low railway bridge (12½ ft/3.9m), and then you will turn immediately right (towards Castelnaud/Daglan). After about ½ mile (1 km), turn right onto the D57 heading towards Castelnaud, and crossing the Dordogne river. The D57 then leaves Castelnaud (towards Saint Cybranet/Daglan) bearing to the left (heading up the Céou valley). After 2½ miles (4 km), you will arrive in Saint Cybranet. Go through the village (towards Cénac/Domme). After crossing the Céou River, the road bears right. La Belle Demeure is on the bend, the house before last on the left, the only one without a gate and with a blue sign outside. Pull into our little courtyard so you can unload your car. Once you are settled in, we will show you where to park.

From **Périgueux** (about 1¼ hours) :

Take the N2089 south-east out of Périgueux (towards Brive) and continue past the junction for the new A89 motorway. About 1 mile after going under the A89, you will reach a roundabout where you should take the D710 off to the right (towards Sarlat/Les Eyzies and Espagne/Toulouse Bis). After 9 miles (15 km), the road for Les Eyzies and Sarlat forks off to your left, but you should continue on the D710, following directions for Le Bugue and Espagne/Toulouse Bis.

Once you reach Le Bugue's one-way system (after a further 10½ miles/17 km), go all the way through the village without crossing the bridge over the Vézère River in the middle of the town, towards Campagne.

You will cross the Vézère river, enter the village of Campagne, then shortly bear off right onto the D35 to drive the 6 miles (10 km) up and over the hill into St Cyprien - keep an eye out at the top of the hill for the turning right for the 2 mile, (3½ km) rather bumpy, descent into St Cyprien. At the first 'Stop' sign, keep going straight on in St Cyprien, avoiding the middle of the village and it's one-way street, until you reach the main D703 road where you will turn left (towards Sarlat).

After 6 miles (10 km), you will reach Beynac. Once you have passed through Beynac, you will go under a low railway bridge (12½ ft/3.9m), where you will turn immediately right (towards Castelnaud/Daglan/La Roque Gageac). After about ½ mile (1 km), turn right onto the D57 crossing the Dordogne river and heading into Castelnaud La Chapelle. The D57 then leaves Castelnaud (towards Saint Cybranet/Daglan) bearing to the left heading up the Céou valley. After 2½ miles (4 km), you will arrive in Saint Cybranet. Go through the village (towards Cénac/Domme). After crossing the Céou River, the road bears right. La Belle Demeure is on the bend, the house before last on the left, the only one without a gate and with a blue sign outside. Pull into our little courtyard so you can unload your car. Once you are settled in, we will show you where to park.

From **Calais (avoiding Paris)** (about 9 hours) :

Upon leaving Calais, follow Boulogne and Rouen on the A16 going south. At Abbeville, turn off the A16 at Junction/Sortie 23 to take the A28 to Rouen. After having passed through the tunnel on the approaches to Rouen, follow signs for Paris on the A13 - you need to keep your eyes peeled for the turning off to the left for it immediately you have crossed the Seine for the first time - it is a turning that dips off down to the right, normally with a sign pointing towards SOTTEVILLE. If you do miss it, it isn't the end of the world, as you can continue on, and still come out onto the A13.

Stay on the A13 for about 14 km, and then turn off onto the A154 to Evreux and Orleans. Carry on past Evreux to Dreux, Chartres where you join the A10 shortly before Orleans.

Then, it is just straight down on the A71 to Vierzon and then onto the A20 motorway, leaving it at Souillac, just south of Brive. From there, having left the A20 Sortie/Exit 55 (towards Sarlat) taking the D804 (which will soon become the D703 once you have left the Lot and are in the Dordogne).

After 12 miles (20 km), leave the road to Sarlat off to your right and turn left to continue along the D703 towards La Roque Gageac/Bergerac for 7 miles (11 km) (passing Carsac, Cingle de Montfort) until you turn left in Vitrac Port.

After turning left in Vitrac, you will continue for about another 2 miles (3 km) where you will see the road for La Roque Gageac turn off to your right, but you should use the D46 to continue on into Cénac, crossing the Dordogne.

Cénac, about 300 yards/metres after crossing the river, there is a crossroads at a café (Bar Pauly). Left would take you up to Domme, but you should turn right to take the D50, towards Saint Cybranet, climbing up and over the hill for about 3 miles (5 km). La Belle Demeure is the 2nd house on your right after passing the Saint Cybranet village sign, the only one without a gate and with a blue sign outside. Pull into our little courtyard so you can unload your car. Once you are settled in, you can then park your car in our field over the road.